

HDD Digital Jukebox User's Manual

INTRODUCTION

WHAT IS MP3/WMA FORMAT?

MP3 / WMA format files are compressed digital audio files, which consumers can listen to with near CD quality. Commercial CD audio files can be compressed to MP3 / WMA format files, which are suitable for internet transmission due to their compact size and can be stored in a portable audio device. The users, for example, can record their own favorite music album, storing it in HDD in a digital audio player.

WHAT IS THIS DIGITAL JUKEBOX PLAYER?

This Digital Jukebox Player is a portable device, which can be used for MP3 music files playback and MP3 files record/playback, and it additionally can be used as a drive while connected to PC.

You can enjoy CD quality music with the mass storage capacity device, in which you can store up to 5000 songs, because the digital music files accessed by this Digital Jukebox player are stored in 2.5" HDD.

Furthermore, it can be recognized as portable removable drives when connected to PC or notebook by the USB interface cable.

PACKING LIST

Please check the following items that can be found in this package.

- ?? Digital Jukebox Player
- ?? Earphone (White)
- ?? USB cable; A to Mini USB type
- ?? AC/DC Adapter
- ?? Pouch
- ?? User Manual
- ?? Driver installation CD

WARNINGS

1. Under Copyright laws the user is liable to obtain the license, before playing or recording copyright protected music, except for **personal use**. That is, if you make **one recording only** for playing to yourself, or for personal use at home. **This applies to music files on Web pages too!**
2. The moment you give only one copy to someone else, you are distributing or duplicating the music and it is no longer for your personal use, you must obtain a license to do this first.

PRECAUTIONS

The supplier holds no liability for any claims if the product ceases to function correctly due to misuse, because it has been dropped, subjected to violent vibration, extremes of temperature or if any attempt has been made to open the case, apart from the battery cover, to replace batteries.

1. Normal vibration will not affect the operation of the Digital Jukebox player. However, dropping or shocking may cause damage to the product.
2. The product is not designed for water-resistant usage. Drenching the product may cause damage.
3. Do not clean up the product with chemicals such as thinners, benzene and alcohol that may deface the surface.
4. Avoid placing the Digital Jukebox player in places of high humidity or close to a heat source.
5. Unintentional electrostatic discharge may shut down or damage the product. You may need to remove then replace the batteries to reset it.
6. Please full charge the battery about three hours before using M7170.

Note: Please full charge the batter before using M8170.

INSTALLING SOFTWARE

MINIMUM SYSTEM REQUIREMENTS

Windows 98SE / ME / 2000 / XP.

Pentium 200 MHz or above.

Disk Drive 16MB free hard disk space (to download and upload files from the player).

32MB system memory

USB port (A-Type).

NOTE:

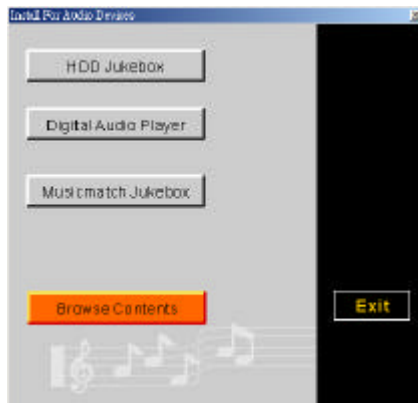
✂✂ This specification is for the download driver software supplied with this player only. An increased PC specification is likely to be required for application software for music file creation.

✂✂ It is highly recommended that charge the battery first before you power on the Digital Jukebox player.

INSTALLING THE DRIVER SOFTWARE/ AudioPhile.exe

DON'T connect the USB cable from your computer to your MP3 player **BEFORE** installing the driver.

1. Put the installation CD into CD-ROM Drive and the "Install For Audio Devices" dialog box appears as below.



2. Press "HDD Jukebox" or "Digital Audio Player" to install the AP or/and the DRIVER.

3. If you choose "Digital Audio Player", the dialog box appears as below.

You can press the button by the function of your player. (The function notes on the side of package.)



4. Follow the instructions to continue installing.

5. After Windows is done installing the drivers, press the "Finish" button to finish the installation process.

6. Plug the USB cable from your computer to your MP3 player.

7. The computer will detect the player as a new device.

Note: If the computer doesn't detect the player as a new device, **Please restart your computer .**

INSTALLING THE MUSIC MANAGEMENT SOFTWARE

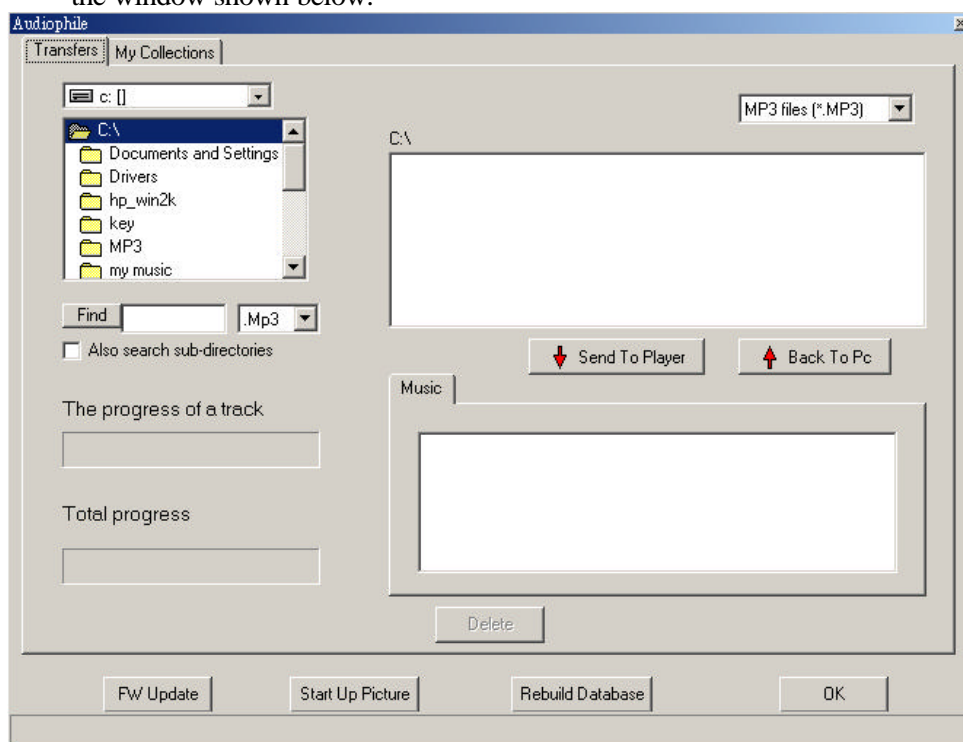
Now it's time to introduce our sophisticated AudioPhile.exe, music management software between the computer operating system and the Digital JukeBox player. This section will describe PC System Requirements, installation method and detailed introduction on Audiophile.exe by steps as follows:

1. PC System Requirements

- ☞ Microsoft Windows 98, Me, 2000 or XP
- ☞ Pentium II with 32MB RAM and 64 MB RAM (Recommended)
- ☞ USB port
- ☞ CD-ROM drive
- ☞ Internet connection recommended
- ☞ 32MB free hard drive space

2. Executing the AudioPhile.exe

- ☞ Make sure the supplied USB cable has been connected right between the PC and MP3 player.
- ☞ Double-click audiophile.exe icon to start the following music management functions and firstly you will see the window shown below.



☞ On the "transfer" tab, you can do the following features described below by function-oriented items:

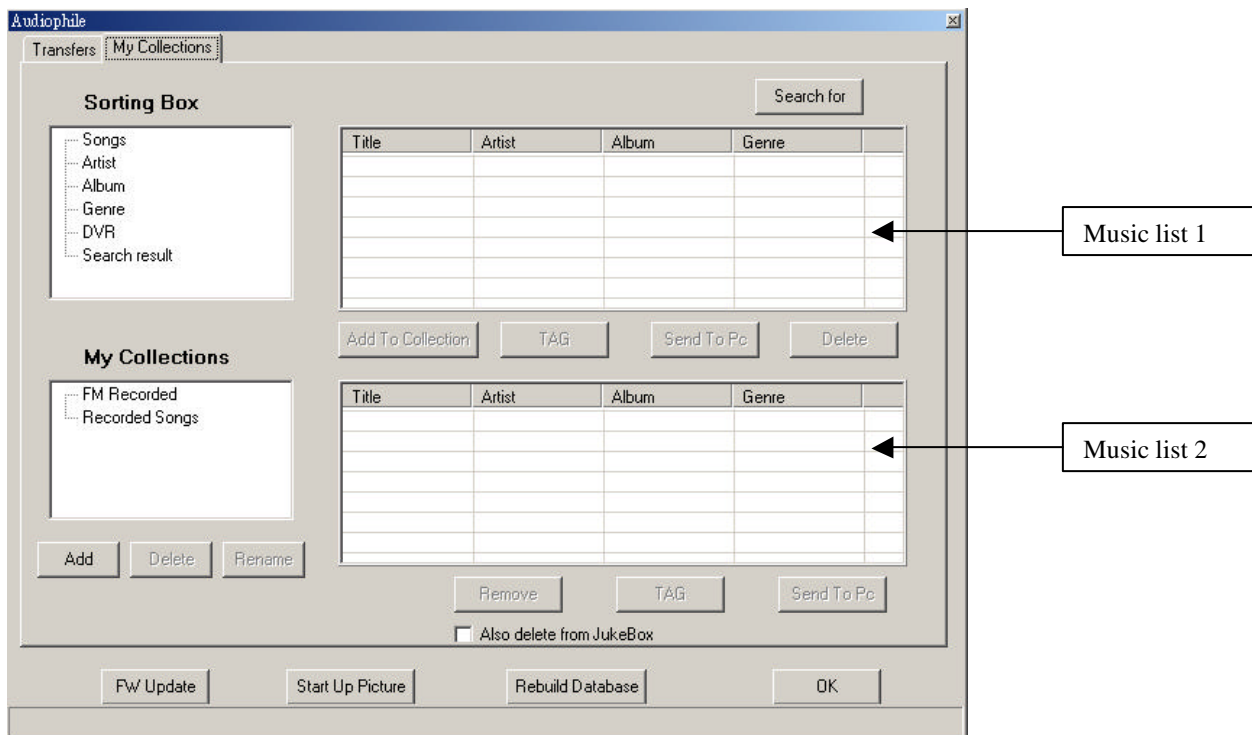
1. To download files to your MP3 player

- ☞ Go click the specified folder and then the file name(s) saved in the folder will show up soon in the file list on PC.
- ☞ Select the desired MP3 file(s) shown in the file list on PC and then click the "Send to player" button to download to the MP3 player. Meanwhile the progress bar will dynamically show the status of the progress.

2. To upload files to your PC system

- ☞ Select the desired MP3 file(s) stored in the "music" tab, the file list on MP3 player, and then click the "Back to PC" button to upload to the PC system. Meanwhile the progress bar will dynamically show the status of the progress.

☞ On the "My Collection" tab, you can easily manage or reorganize your music files. The related descriptions are as follows:

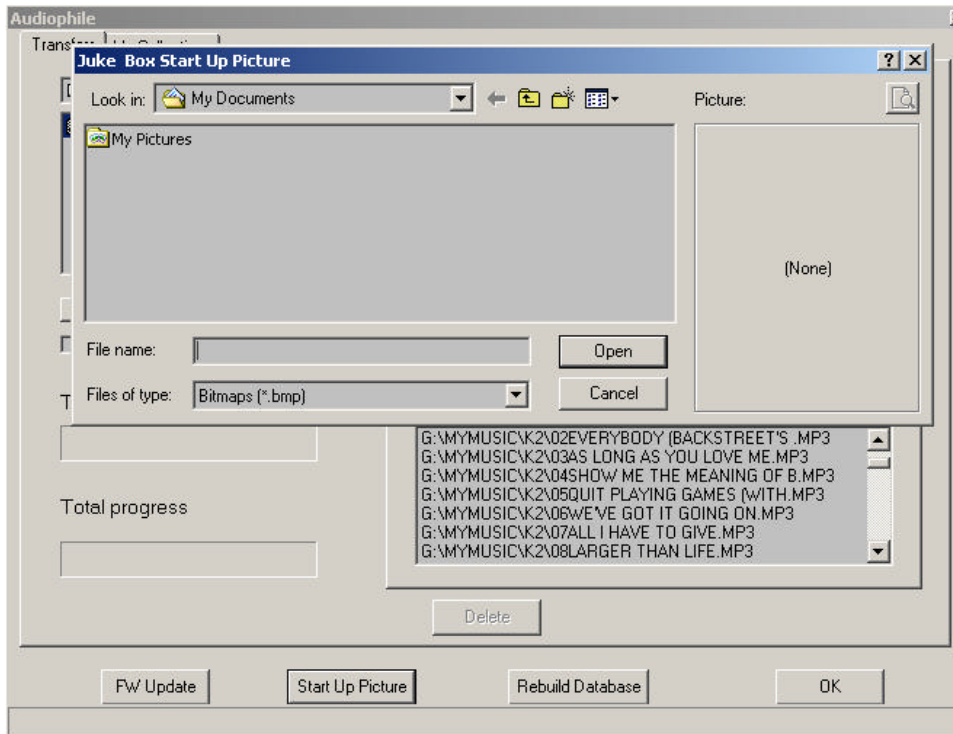


1. Choose these items shown on the “Sorting Box”
 - ✎✎ Click the “TAG” button to edit the ID3 Tag information, including title, album, artist and genre for the selected song.
 - ✎✎ Click the “Delete” button to dismiss the specified song. Be careful. Deleting in the sorting box will also delete the music file on the user’s JukeBox.
 - ✎✎ Click the “Add to Collection” button to add your favorite song to your appointed folder listed on the “My Collection” box.
2. Choose the item shown on the “My Collections” box
 - ✎✎ Click the “TAG” button to edit the ID3 Tag information, including the title, album, artist, and genre for the selected song.
 - ✎✎ Click the “Remove” button to delete the selected song from the music list 2, next to my collection box.
 - ✎✎ Click the “Add” ,”Delete” or “Rename” button to change the original setting.
3. Click the “search for” button to fill in title, artist or album to search and then the desired songs will be shown in the music list 1, next to sorting box.

Note: you also can use “Conditional search” to search. That is, Selecting“*” as the character can replace any other ones while searching.
4. In the “Sorting Box”, each item just has one folder . But the item "Artist" might have one more layer if the artist hs more than one Album.

✎✎ To change the start up picture

1. If you would love to change the start up picture shown on the MP3 player’s LCD screen, click the “start up picture” button to get further setting as shown below.



☞ Choose the folder in which your favorite pictures are stored and then select a picture you want. At the same time, you can preview the picture demonstrated on the right box. **Please note you just can select the bmp file with monochrome and the dimension of 160(W) × 240mm(L).**

☞ Just click on the “OPEN” button to finish the whole setting.

☞ To upgrade the firmware

☞ It's easy for you to get the firmware on the dealer's web site.

☞ Save the updated firmware to your PC.

☞ Be sure your MP3 player is well connected to the PC with a supplied USB cable.

☞ Operate the audiophile.exe and then click the “F/W update” button.

☞ Look up the folder in which your firmware upgrade file is located, select and open the specified file.

☞ If the firmware update is complete, drop the USB cable out and reboot your MP3 player.

☞ The progress bar of firmware upgrade will show up, and then show the progress status of firmware upgrade.

☞ The player will automatically power off while the firmware upgrade is finished.

☞ Restart the player to enjoy your music.

☞ To rebuild the database

While selecting song(s) to play, if the system of the Jukebox always shows “file missing” message, please use the “rebuild the database” function. However, please note that after performing this function, all music file(s) in “my collections” box will disappear. If not necessary, we don't suggest you to do this function often.

Note:

If the song is downloaded through Audiophile, it must be deleted from Audiophile.

USE AS PC DRIVES

If you would like to use the JukeBox as HDD, please follow the below steps to finish.

1. Connect the JukeBox to your PC' s or (Notebook' s) USB port with the USB cable supplied.
2. Click on the **My Computer** icon, you will find one new removable drive such as “ E “ or “ F “drives. Under win 98 operation system, if not, Please skip back to page 1 to finish the installation procedure of driver.
3. Drag and drop the file(s) to or from the Jukebox as you do so with the HDD.

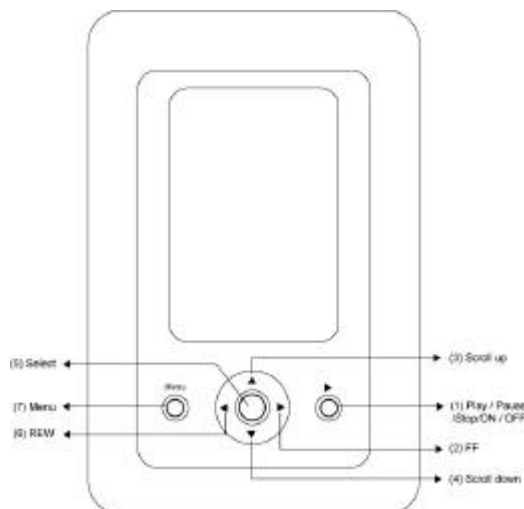
MESSAGE WHILE CONNECTION

The diagram of “ PC-Jukebox link” will show up on the screen of the MP3 player to indicate the player has been connected to the USB port of PC. While data transferring is ongoing, the progress bar will automatically appear the status of the processing. Do not disconnect the player from PC at this moment.

NOTES:

- ?? **The removable drive provided by this player can be used for storage of files with file format other than MP3.**
- ?? **When the HDD doesn't store the MP3 files, pressing the ?| / button will have no effect.**
- ?? **Any abnormal disconnection between PC and player may cause the computer to halt while transmitting data. This may cause the data in the HDD to be written in error. If necessary, you just need to proceed with scanning disk or defragment.**
- ?? **Once the transfer of files has been started, you may press the Cancel button on the dialogue window to terminate the transferring process. Because it takes some time for PC to remove the data from the register buffer, the dialogue box may soon disappear on the window but the data exchange between the host and device is still in the process. After you plug Jukebox into your PC, the window systems will automatically shows a “Unplug or Ejection hardware“ icon on the bottom right window task bar. If you would love to disconnect the Jukebox from the PC, it' s safer for you to do this by clicking the “Unplug or Ejection hardware” icon and then follow the on screen steps to complete the disconnection.**

Controls



	Button	Description
1	? /	1. Power on / off 2. Play / Pause / Stop
2	?	1. Press to skip to next song 2. Press and hold to forward search 3. Increase under specific settings
3	?	1. Scroll up for item selection 2. Increase under specific settings
4	?	1. Scroll down for item selection 2. Decrease under specific settings
5	SEL	Select item
6	?	1. Press to skip to previous song 2. Press and hold to backward search 3. Decrease under specific settings
7	MENU	Exit current state and return to previous state

NOTE:

Press “MENU” above two seconds and the device prompt user to press “? | / ” for lock all buttons. Press “? | / ” to confirm.

To unlock the hold setting, press MENU” above two seconds and the device prompt user to press “? | / ” for unlock all buttons. Press “? | / ” to confirm.

HDD Digital Jukebox Operation

To Power On

In the Power off condition, you need to press “? | / ” for 2 second to power on

Main Menu



Playing Music

Scroll (? or ?) to “Play My Music”, then press “SEL”

Main Menu

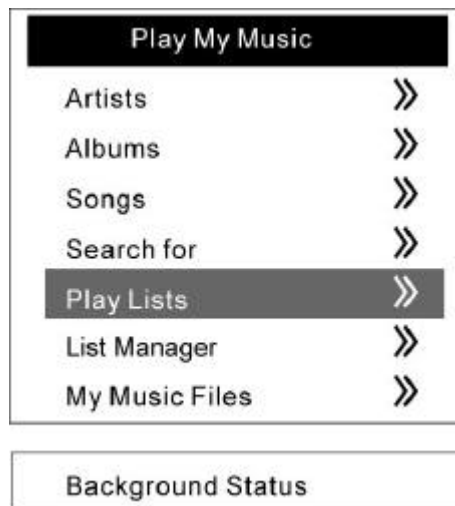


Playing Play Lists

1. Scroll (? or ?) to “Play Lists”, then press “SEL”

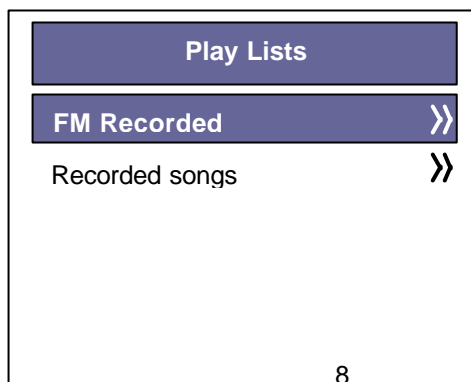
My Music Menu

(Idle)



2. Choose the favorite play list (? or ?), then press “SEL”

Play List Menu



Background Status

3. Choose title of song (? or ?), press “SEL” or “? | / ” to playback

Playback

The screenshot shows a menu with a dark blue header containing 'ID3 Message' and 'ID3 information'. Below the header, the text '0 : 05 : 36' is displayed. A 'Volume' section features a horizontal slider with a double-headed arrow. Below the slider are four menu items: 'Equalizer', 'A-B Mode [A]', 'Upcoming Songs', and 'Played Songs', each with a right-pointing arrow icon. At the bottom of the menu is a 'Background Status' button.

- 4. While the playback is underway, press “ESC / Menu” to navigate songs and execute other operations.
- 5. While navigating is underway, use navigating function to My Music Menu. Scroll indicating bar to Now Playing, then press “SEL” or idle for 18 seconds to Song Content Display.

My Music Menu
(Playback)

Songs

The screenshot shows a menu titled 'Play My Music' with a dark header. Below the header are seven menu items, each followed by a right-pointing arrow icon: 'Artists', 'Albums', 'Songs', 'Search for', 'Play Lists', 'List Manager', and 'My Music Files'. At the bottom of the menu is a 'Background Status' button.

NOTE:

The contents of Recorded songs and FM Recorded are what user recorded from line-in or FM sources. Please refer to Recording section for further information

List Manager

☞ Scroll (? or ?) to “Play My Music”, then press “SEL”;

☞ Scroll (? or ?) to “List Manager”, then press “SEL” to go into the “Play List Manager” display.



1. Creating Play List

☞ Scroll (? or ?) to “Create Play List”, then press “SEL” to go into the “Create Play List” display.

☞ Under the edit box, select “Clear” to delete the default character string, “New Play List”.

☞ Scroll to select the first character of the desired Play list name and then press ”SEL” to save your choice. Continue to select the whole character string and press ”OK” to finish creating a new play list.

2. Deleting Play List

☞ Scroll to “Delete Play List”, then press “SEL” to go into the “Delete Play List” display.

☞ Select a play list you want to delete and press “SEL” to delete the play list. While you press the ”SEL”, the system will automatically pop up a dialog box to confirm the deletion instruction, then just choose and hit “yes” to finish it.

3. Edit Play List

☞ Scroll (? or ?) to “Edit Play List”, then press ”SEL” to go into the “Edit Play List” display.

☞ Select and press a playlist you want to edit and the system will automatically appear a “Select Function” dialog box to provide you two options including “Add Music” and “Delete Music”

3.1 “Add Music”

☞ Under “Select Function” dialog box, scroll to “Add Music” and then press.

☞ Under ”Select Source” dialog box, it will show you four options: “Artists”, “Albums”, “Songs” and “Search For”. Please choose any option to pick up desired tune.

3.2 “Delete Music”

☞ Under “Select Function” dialog box, scroll to “Delete Music” and then press “SEL” to enter the “Title list” display.

☞ Select and delete any song you want to delete

4. Rename

☞ Scroll (? or ?) to “Rename”, then press ”SEL” to go into the “Rename” display.

☞ Choose any “playlist” you want to rename and press “SEL” to go into the “edit box” for renaming the playlist name.

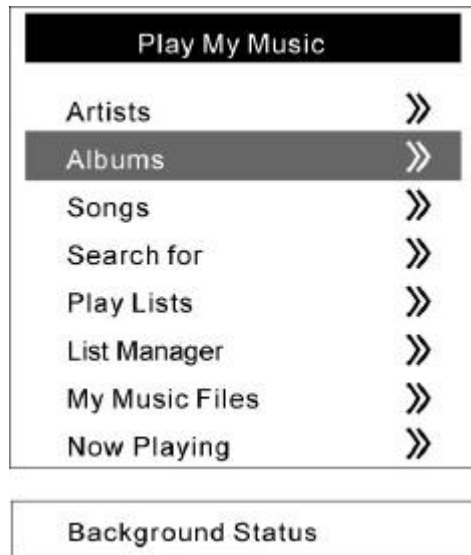
☞ Under the edit box, select “Clear” to delete the original playlist name.

☞ Scroll to select the first character of the desired Play list name and then press ”SEL” to save your choice. Continue to select the whole character string and press ”OK” to finish renaming the playlist.

Playing Artists, Albums

1. Scroll (? or ?) to “Artists” or “Albums”, then press “SEL”

My Music Menu

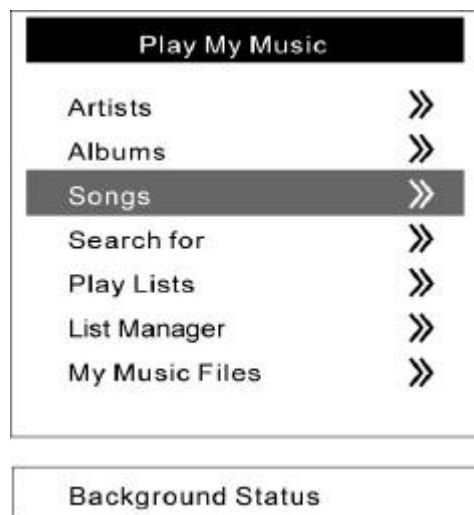


2. Choose the favorite artist or album (? or ?), then press “SEL”
3. Choose artist or album of song (? or ?), press “SEL” or “? ↓ / ” to playback
4. While the playback is underway, press “ESC / Menu” to navigate songs and execute other operations.
5. While navigating is underway, use navigating function to My Music Menu. Scroll indicating bar to Now Playing, then press “SEL” or idle for 18 seconds to Song Content Display.

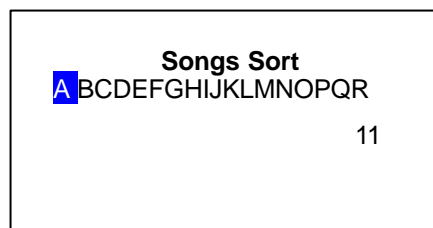
Playing Songs

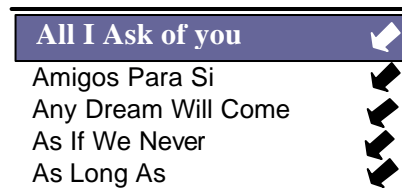
1. Scroll (? or ?) to “Songs”, then press “SEL”

My Music Menu



2. Scroll (? or ?) to select the first character of each music title, then press “SEL” to confirm



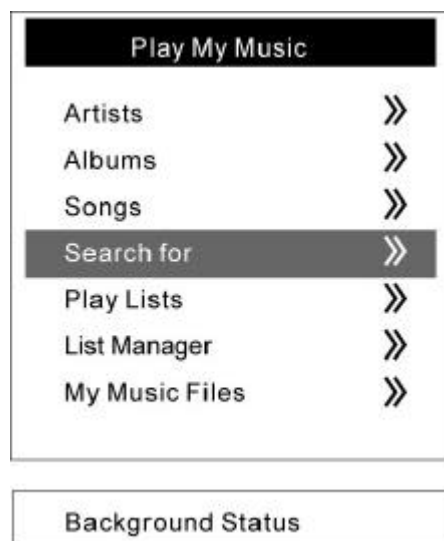


3. Scroll to favorite title (? or ?), press “SEL” or “? | / ” to playback.
4. While navigating is underway, use navigating function to My Music Menu. Scroll indicating bar to Now Playing, then press “SEL” or idle for 18 seconds to Song Content Display

Search for

1. Scroll (? or ?) to “Search for“, then press “SEL”

My Music Menu



2. Scroll (? or ? or ? or ?) to select the first character of each music title, then press “SEL” to confirm, and so do other successive characters.



3. Scroll (? or ? or ? or ?) to , press “SEL” to select single song from current list.
4. press “SEL” or “? | / ” to play selected song and postpone the scheduled songs until the single song playback is completed.

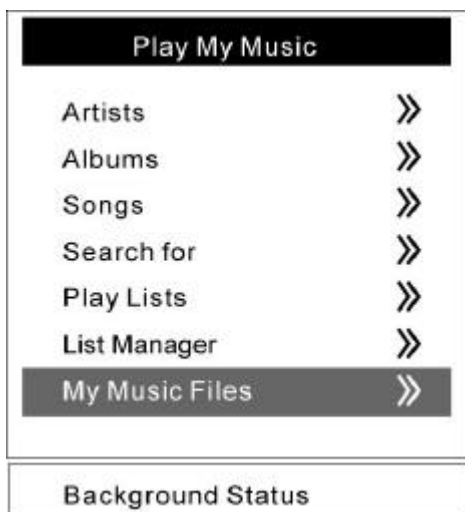
Useful tips for searching

1. Selecting “*” as the character can replace any other ones while searching. For example, typing “a*c” string to search all available titles which match the first and third characters of “a” and “c”.
2. Scroll (? or ? or ? or ?) to to backspace
3. Scroll (? or ? or ? or ?) to X to dismiss typing string

Playing My Music Files

1. Scroll to “My Music Files”, then press “SEL”

My Music Menu



2. Scroll to select favorite file name, then press “SEL” or “? | / ” to playback
3. While navigating is underway, use navigating function to My Music Menu. Scroll indicating bar to Now Playing, then press “SEL” or idle for 18 seconds to Song Content Display

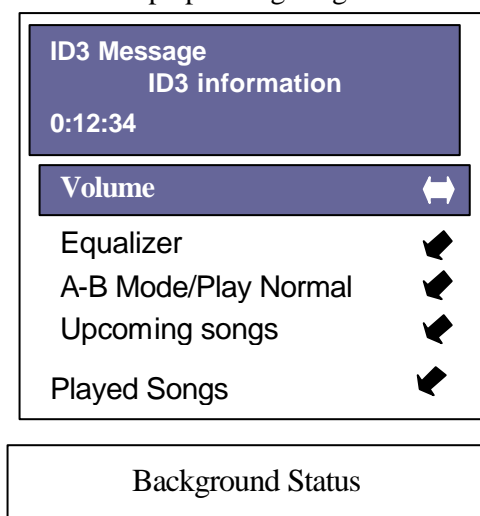
NOTE:

Only one sub-directory is available under My Music directory.

Song Content Display

While playback is underway, song content information will emerge on the LCD screen. Scroll (? or ?) to adjust volume, change equalizer, trigger A-B mode or look up upcoming songs.

Playback
(Volume control)



Volume Control

1. Scroll (? or ?) to “Volume”, then press “SEL”
2. Scroll (? or ?) to adjust volume, press “SEL” to confirm or “MENU” to cancel

Equalizer

1. Scroll (? or ?) to “Equalizer”, then press “SEL”
2. Press “SEL” to switch equalizer, scroll (? or ?) to change between “Normal”, “Classic”, “Jazz”, “Rock”, “Pop”, “Bass” or “Genre” mode, then press “SEL” to confirm
3. If EQ has been set as Genre mode, scroll down (?) to successive item for high or low frequency settings
4. Press MENU to return

A – B Mode

1. Scroll (? or ?) to “A – B mode [A]”, then press “SEL” to set the beginning point
2. Press “SEL” again to set the end point
3. Press “SEL” to terminate A – B mode and resume normal playback

Looking up Upcoming Songs

1. Scroll (? or ?) to “Upcoming Songs”, then press “SEL” to look up approaching songs
2. Press MENU to return

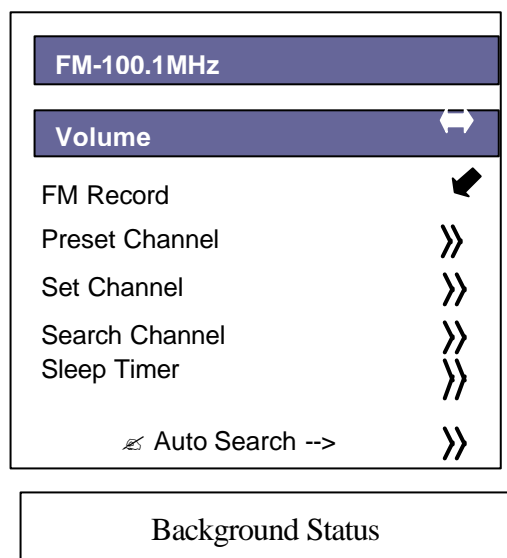
Looking up Played songs

1. Scroll (? or ?) to “Played Songs”, then press “SEL” to look up previously playing songs
2. Scroll (? or ?) to favorite song, then press “SEL” to replay this song or press MENU to return

FM Radio

Scroll to “FM Radio”, then press “SEL”

Main Menu



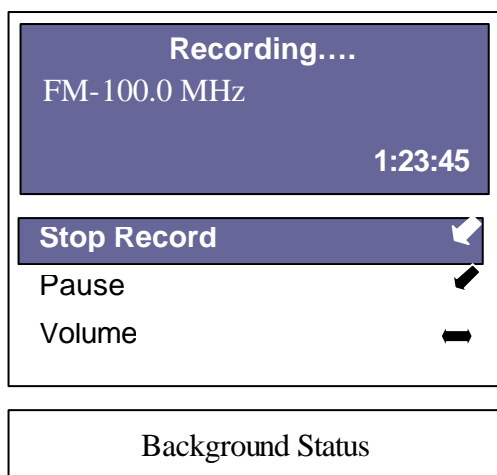
Volume control

1. Scroll (↑ or ↓) to “Volume”, then press “SEL”
2. Scroll (← or →) to adjust volume, press “SEL” to confirm or “MENU” to cancel

FM Record

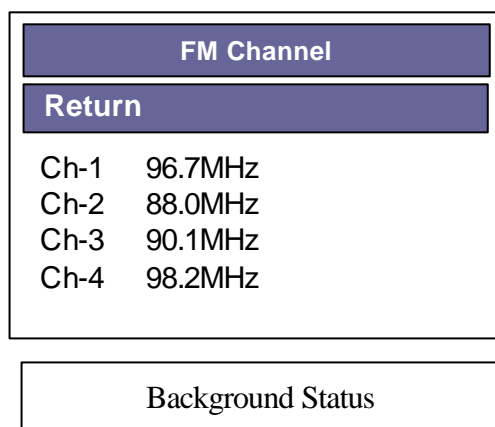
1. Scroll (↑ or ↓) to “FM Record”, then press “SEL”
2. Scroll (← or →) to “Pause” and press “SEL” to pause recording. While pause-recording is underway, scroll to “Resume” and press “SEL” or press “? | / ” to resume recording
3. Scroll (← or →) to “Volume” and press “SEL” to change earphone output volume while recording.

4. Scroll to “Stop Record” and press “SEL” to terminate recording



Preset Channel

1. Scroll (? or ?) to “Preset Channel”, then press “SEL”
2. Scroll (? or ?) to select preset frequency, then press “SEL” to confirm or “MENU” to exit



Set Channel

1. Scroll (? or ?) to “Set Channel”, then press “SEL”
2. Scroll (? or ?) to reset the current FM frequency to appointed channel, then press “SEL” to confirm or “MENU” to exit

Search Channel

1. Scroll to “Search Channel”, then press “SEL”
2. Press (? or ?) to adjust frequency by 100kHz. Press and hold FF or REW to continuously search frequency.

3. Press “SEL” to confirm frequency or “MENU” to exit

Auto Searching

Press (? or ?) to adjust frequency by 100kHz. Press and hold FF or REW to continuously search plain frequency.

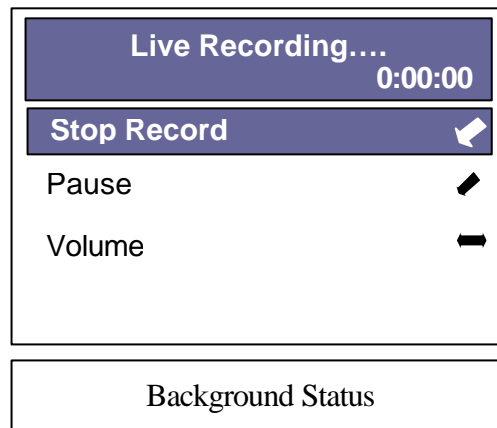
Sleep Timer

1. Scroll (? or ?) to “Sleep Timer”, then press “SEL”
2. Press to change the settings. Scroll (? or ?) to change the default sleep timer, then press “SEL” to confirm or “MENU” to exit

Recording

Voice Record (Recording by Built-in Mic)

1. Scroll (? or ?) to “Voice Record”, then press “SEL”
2. Scroll (? or ?) to “Do Record”, then press “SEL” to confirm
3. Scroll (? or ?) to “Pause” and press “SEL” to pause recording. While pause-recording is underway, scroll to “Resume” and press “SEL” or press “? | / ” to resume recording



4. While recording is underway, scroll to “Volume” and press “SEL” to adjust earphone output volume
5. Scroll (? or ?) to “Stop Recording” and press “SEL” to terminate recording

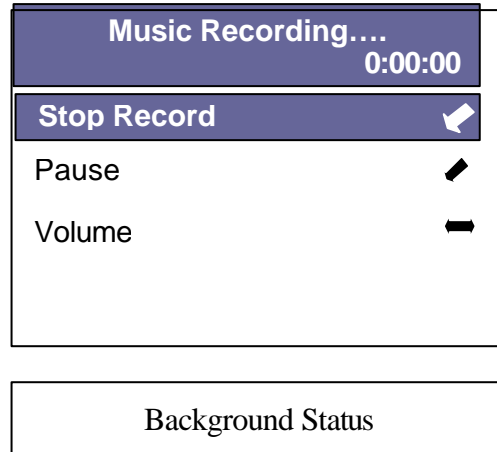
FM Record (Recording from FM Radio)

Please refer to FM section

Music Record (Recording from Line-in Source)

1. Scroll (? or ?) to “Music Record”, then press “SEL”

2. Scroll to “Record”, then press “SEL”
3. Scroll (? or ?) to “Pause” and press “SEL” to pause recording. While pause-recording is underway, scroll to “Resume” and press “SEL” or press “? | / ” to resume recording



4. While recording is underway, scroll to “Volume” and press “SEL” to adjust earphone output volume
5. Scroll to “Stop Recording” and press “SEL” to terminate recording

NOTE: You can follow the path: Preferences/ Record Quality to select your desired record quality.

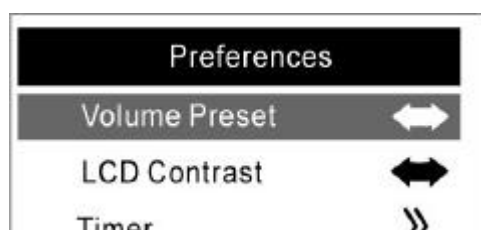
Preferences

Scroll to “Preferences”, then press “SEL”

Main Menu



Settings Menu



Volume Preset

1. Scroll (? or ?) to “Volume Preset”, then press “SEL”
2. Press (? or ?) to change the default volume while powered on, then press “SEL” to confirm or “MENU” to cancel

LCD Contrast

1. Scroll (? or ?) to “LCD Contrast”, then press “SEL”
2. Press (? or ?) to change the default LCD contrast while powered on, then press “SEL” to confirm or “MENU” to cancel

Timer

Scroll (? or ?) to “Timer”, then press “SEL”

1.Backlight Timer

- 1.1 Scroll (? or ?) to “Backlight Timer”, then press “SEL”
- 1.2 Press “SEL” and scroll (? or ?) to change the default backlight timer (0~10 sec, ON), then press “SEL” to confirm or “MENU” to exit

2.Sleep Timer

- 2.1 Scroll (? or ?) to “Sleep Timer”, then press “SEL”
- 2.2 Press “SEL” and scroll (? or ?) to change the default sleep timer, then press “SEL” to confirm or “MENU” to exit

3.Standby Timer

- 3.1 Scroll (? or ?) to “Standby Timer”, then press “SEL”
- 3.2 Press “SEL” and scroll (? or ?) to change the default standby timer, then press “SEL” to confirm or “MENU” to exit

Play Options

1. Scroll (? or ?) to “Play Options”, then press “SEL”
2. Scroll to “Sequence Playlist”, “Repeat Title”, “Repeat Playlist”, “Random” or “Repeat & Random”, then press “SEL” to confirm or “MENU” to exit

Date/Time

1. Scroll (? or ?) to “Date / Time”, then press “SEL”
2. Scroll (? or ?) to “Year”, “Month”, “Date”, “Hour” or “Min” respectively, then press “SEL”
3. Scroll (? or ?) to modify and press “SEL” to confirm or “MENU” to exit

Language

1. Scroll (? or ?) to “Language”, press “SEL” to go into the “Music Information” display including five languages: English, Traditional Chinese, Simplified Chinese, Japanese and EUROPE.
2. Select any language you want to use and then press “SEL” to confirm your setting.
3. After you finish “Music Information” setting, the player system will let you enter the “Menu Language” display to set the “Menu Language” options including English, Traditional Chinese, Simplified Chinese, German, Spanish, French and Japanese.
4. Select any language you want to use and press “SEL” to confirm your choice.

Record Quality

1. Scroll (? or ?) to “Record Quality”, then press “SEL”
2. Select any desired record quality option and then press “SEL” to confirm your choice.

Information

1. Scroll (? or ?) to “Information” under Main Menu, then press “SEL” to confirm
2. You can see the related system information of the player like Firmware version/Hardware version/Total space/Free space/How many songs the player hold...

To Power Off

3. Scroll (? or ?) to “Power Off” under Main Menu, then press “SEL” to confirm

Main Menu



4. In the “Stop” mode(status of idle), you also can press “? | / ” for 2 second to power off

FAQs

1. What are the differences between MP3 and WMA?

MP3 / WMA format files are compressed digital audio files, which consumers can listen to with near CD quality. Commercial CD audio files can be compressed to MP3 / WMA format files, which are suitable for internet transmission due to their compact size and can be stored in a portable audio device. The users, for example, can record their own favorite music album, storing it in HDD in a digital audio player. WMA format offer nearly CD quality music in a smaller file size than MP3. That means you can double your music files in WMA format compared to MP3 format.

2. How to solve the compatibility issue between Windows OS in English version and filename in non-English.

If the language versions between your Windows OS and filename, which you desire to transfer to the music player by included Audiophile AP, are different, you will get some problems like the following:

- ✂✂ These filenames will be shown abnormal characters
 - ✂✂ The system of Audiophile will automatically prompt you the dialog box: “the selected files do not exist”, while you click one file in the file list on PC and then press “Send To Player” button to send to the player.
- If the above happen under Win2000 or Win XP, you need to adopt the following steps to solve this problem.
- ✂✂ Click My Computer/Control panel/Regional options to go into the Regional options setting.
 - ✂✂ Click the “General” tag and hit the “Set default...” button to choose language.
 - ✂✂ The Windows OS will pop up a “Select System Locale” window. Click the drop-down list to select the language version which your filename is made in and then press “OK” button to finish the whole setting.
 - ✂✂ The windows OS will pop up “General window” information box and just hit “yes” to pass it.

3. Why can't the PC detect the player as a removal device after connecting player to PC?

- ✂✂ Make sure you have turned the player on.
- ✂✂ Make sure USB cable has been connected properly between PC and Player.
- ✂✂ You have to install driver under Win98/ME.

4. How to upgrade firmware

- ✂✂ It's easy for you to get firmware on the dealer's web site
- ✂✂ Save updated firmware to your PC.
- ✂✂ Be sure your MP3 player is well connected to the PC with a supplied USB cable.
- ✂✂ Operate the audiophile.exe and then click the “F/W update” button.
- ✂✂ Look up the folder in which your firmware upgrade file is located, select and open the specified file.
- ✂✂ If firmware update is complete, drop the USB cable out and reboot your MP3 player.
- ✂✂ The progress bar of firmware upgrade will show up, and then show the progress status of firmware upgrade.
- ✂✂ The player will automatically power off while the firmware upgrade is finished.
- ✂✂ Restart the player to enjoy your music.

5. What operating systems work with the Player?

The player support Win98SE/ME/2000/XP.It will not work on Win95 or NT

6. Does the player support Mac OS?

- (1) If you use the player as the removable drive, the player will work well with Mac OS 9.04 or above.
- (2) If you play music with the player, please note the following limits:
 - ✂✂ The audiophile, music management software, can't work with Mac system.
 - ✂✂ Only under Mac OS 9.2 system, you can drag and drop your music files from/to the MYMUSIC folder of the player.

7. Why can't the AP (Audiophile) recognize the player after I format the player?

After you finish formatting, be sure to follow below procedures to activate the AP function:

Turn the player on first, connect it to the PC and then click the Audiophile.exe.

8. How to download music to the Player?

You have two ways to download music to your Player:

- ✂✂ Use the Audiophile, music management software, to download music to the player.
- ✂✂ Just drag and drop music file to the default folder, MY MUSIC, or any folder you make under MY MUSIC directory.

9. What kind of files the player supports?

- (1) If you use it as a removable device, it works like HDD and you can store any files to it.
- (2) If you use it as MP3 player, it just supports MP3 and WMA.

10. How to reset

Please press "Sel", "Menu" and "Play" buttons at the same time.

Do not use unless the player freeze .